



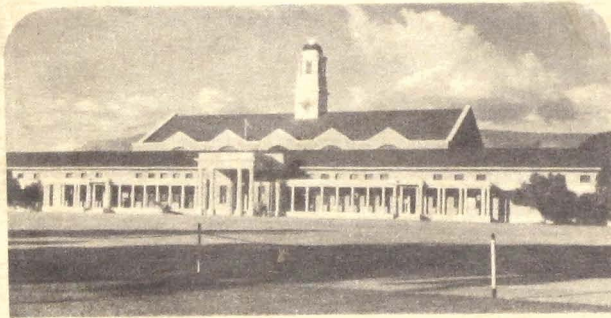
Mussoorie View

MUSSOORIE

GUIDE

BY

A. W. Cornelius



Indian Military Academy

Price No 12

Rs 27

(All Rights Reserved)

1954

TABLE OF CONTENTS

			PAGES
1.	A General Description of Mussoorie 1—3
2.	The Climate of Mussoorie 3—4
3.	Journey by Foot or the Bridle Path 4—8
4.	Journey by Motor Bus or Car 8—12
5.	The old Journey from Saharanpur to Rajpur 12
6.	Life of the Villagers in Rural Mussoorie 13—14
7.	Mussoorie can easily be divided into six parts or sections 14—19
8.	History of Mussoorie & Landour 20
9.	Routes into the Interior 21
10.	Table of Distance 22
11.	Height of Important Places in the District of Dehra Dun 23—24
12.	Places of Amusement in Mussoorie 24—25
13.	Ideal Picnic Places 25—29
14.	Schools and Colleges in Mussoorie 29—33
15.	Dog Tax 34
16.	Landour 34—35
17.	Railway Time Table & Motor Gate Timings 36

PREFACE

The urgent need for a guide book of "Mussoorie and Landour" has been greatly felt, especially by tourists and visitors. It is hoped that this little booklet will meet these requirements.

I have received invaluable assistance from Mr. Percie-Paine.

I am also indebted to the undermentioned publications which have supplied me with valuable and helpful information for this guide.

(a) "Memoirs of Doon" of 1874 by G. R. C. Williams, B. A.,

(b) "Dehra Dun Gazetteer", Vol. I by H. G. Walton, I. C. S.

I have written everything in good faith and where information was both interesting and ably put, I have quoted verbatim from the recognised authorities.

I shall welcome criticism, comment and advice which is helpful ; and will, where possible, use it in the next Edition of 1955.

A. W. Cornelius



J. B. MANGHARAM'S

Wellknown
BISCUITS



- CRISPY
- TASTY
- CRUNCHY



J. B. MANGHARAM & CO. GWALIOR

AGENCY DEPOTS:

Kulri Chowk, MUSSOORIE,
(Phone 235)

7-D, Astley Hall,
DEHRA DUN.

MUSSOORIE

I. A General Description of Mussoorie

The town of Mussoorie is more than 6,000 ft. high. It is 6,500 ft. above sea-level at Kulri Bazar and 7,029 feet at Gun Hill. It is situated in North Latitude 30° 27' and East Longitude 78° 61' ; and is 7 miles from Rajpur and 14 miles from Dehra Dun by the bridle path and 22 miles by motor road. The Mussoorie hills run parallel to the Siwalik Range of the Himalayas, and cover an area of 22 square miles.

Mussoorie is called the "*Queen of Hill Stations*" as the people come to Mussoorie principally to have a holiday and enjoy the cool climate away from the scorching heat of the plains. It is supposed to be the largest pleasure-resort in India, and recently it has also become the summer home of many ruling princes.

The origin of the name Mussoorie may have arisen from the following. The *first* is that there are trees called "Mansuri" trees, growing near the Savoy Hotel and these may have given the name "Mansuri" (as pronounced by Indians) to Mussoorie. *Secondly*, there was once an outlaw named 'Mansur'

The oldest

Estd 1900

The most favourite

FOR

HIRE AND SALE

OF

LATEST FURNITURE AT COMPETITIVE RATES

VISIT

PARMA NAND & SON

Oppo. Allahbad Bank Ltd., The Mall, Mussoorie

Stockists of :

* DURRIES - - -	* FANCY FURNITURE -
* MATTRESSES - - -	* PILLOWS, TOYS - -
* JUTE CARPETS - - -	* LINONIUM - - -
* COIR MATTINGS - - -	* CROCKERY - - -
* ANTIQUE CHINA WARE	* CUTLERY - - -

EXPERT AUCTIONEER OF THE STATION

PHONE 363

who had his headquarters in these parts. So his name was given to the place—Mansuri.

From the Mall Road one can see the Ganges on the left and the Jumna on the right and Dehra Dun in front. The picture of Dehra Dun is remarkably clear from Mussoorie, and at night one can see the lights of Dehra Dun twinkling like a Diwali illumination.

The town also has all the gaieties of modern life, cinemas, dance halls and a skating rink. In summer it is crowded, and appears a very busy town during the season for the holiday-seekers, European and Indian, middle class and upper class, and Rajas, Maharajas, ruling chiefs, etc. It is entirely free from *officialdom*.

The buildings and houses in Mussoorie are mostly of plastered lime and stone ; the roofs are of galvanized sheets. The water supply is pure and fairly abundant. The town is well served with electric lights and the streets and roads are well lighted for miles.

The shops at Mussoorie are full of up-to-date goods, cloth materials and household requisites. One of the best and prettiest rides or walks is round Camel's Back Road. From here, too, one can get a splendid view of the *Everlasting Snows* in the distance. Words cannot adequately express the

Convent Jesus-Marie

HAMPTON COURT
MUSSOORIE.

Under the patronage of
His Grace the Archbishop of Agra.

||| *Boarding and Day School for Boys* |||
||| *and Girls under 12 years of Age* |||

beauty and splendour of the scenery here, with the peaks of the distant Himalayas clad in perennial snow.

Visitors and tourists should not fail to include Mussoorie in their itinerary, affording, as it does, so many and varied attractions.

2. The climate of Mussoorie

The climate of Mussoorie is excellent and seems to suit everybody who comes here. It remains quite cool from April to October. It is not damp like Naini Tal. The real season begins from March 15th and ends in October when most of the holiday makers go down. The Schools and Colleges continue till December. During July and August Mussoorie has a reasonably heavy rainfall and one should not go out without an umbrella or a rain coat or both, even when it is bright and sunny. The month with the best climate is October. One may enjoy viewing the green terraces down the hillsides, which look like a big garden.

By the end of October most of the hotels, shops and places of amusements begin to close down for the season. By November all the business people leave Mussoorie for the plains for about four or five months. Generally

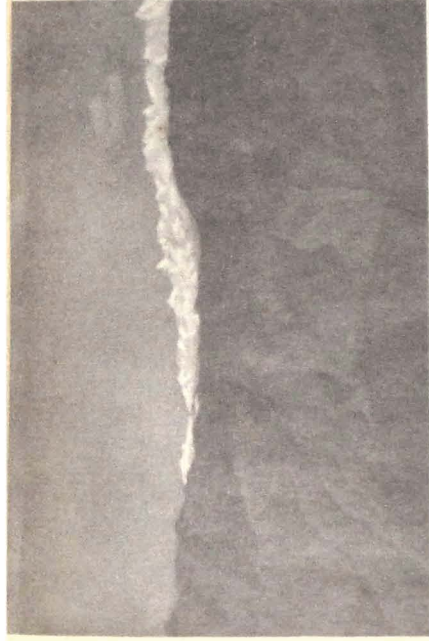
While visiting Dehra Dun, make
your stay comfortable by kindly
affording an opportunity to



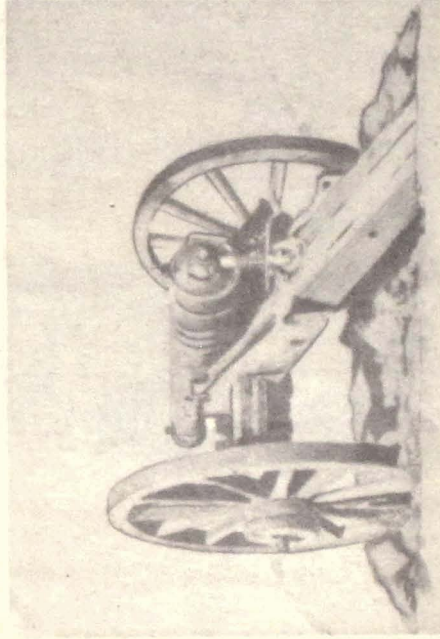
Connaught Hotel & Restaurant
CHAKRATA ROAD, DEHRA DUN

*For serving you with its airy and furnished rooms
(with auto-flush Latrine & Baths attached) and
your choice Meals on Moderate Charges*

Most Comfortable and Central place in the heart of the city.

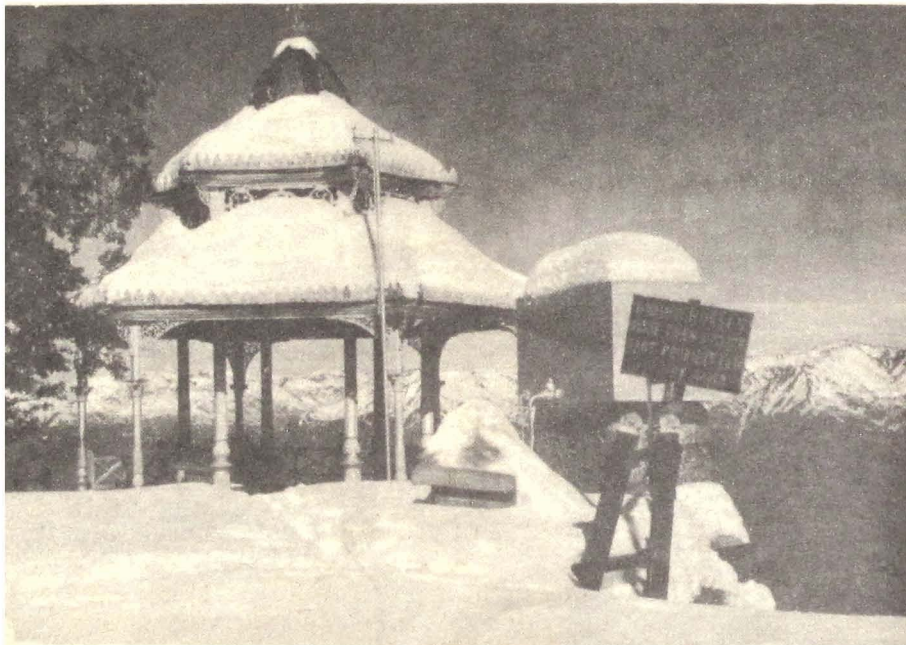


The Everlasting Snows on the Himalayas
Taken from Kellog Church, Landour Depot.



"The Old Gun," which used to be fired at 12:A.M.
to give the Mussoorie residents the correct time.

PRINTED AT THE SURVEY OF INDIA OFFICES (H.L.O.)



Scandal Point in Winter

towards the end of November the cold really sets in and the place becomes deserted; has habited only of wild animals and birds. During December, January and February, Mussoorie has a few falls of snow. The heaviest snowfalls is seldom more than 2 feet.

Mussoorie remains practically deserted till the 15th of March, when the Schools and Colleges begin to open again for their new session, and one can find boys and girls moving about here and there in Mussoorie.

The highest-temperature during the summer is about 78° and the lowest during the winter is about 23°. The rainfall is from 90" to 122" during July, August and September. The snow very seldom falls below Jharipani or Half-way House, the wellknown halting place between Rajpur and Mussoorie on the bridle path.

3. Journey by Foot or the Bridle Path.

Before 1930, when the motor-road was opened to traffic, both people and goods destined for Mussoorie went by the bridle path. This path is still in use, although the traffic upon it is insignificant. If anyone wants to go up on foot or by horseback, he takes a seat in a tonga, or a lorry, or a car from Dehra Dun to Rajpur, costing him -/4/. annas. The cost of a full car is Rs. 5/4

FOR SENIOR QUALITIES
SPORTS & GAMES MATERIAL

Please Visit ! !



Senior Sports House

**Govt. Approved Suppliers,
54, NEW MARKET, (NEAR CLOCK TOWER)
DEHRA DUN.**

VISIT ! ! !

Ram Chander : :

: : : : **& Bros.**

GENERAL MERCHANTS

LANDOUR,

MUSSOORIE

Branch

THE MALL MUSSOORIE

Phone 179.

or Rs. 6/- The distance is only 7 miles from Dehra Dun to Rajpur. From Rajpur the actual climb begins.

At Rajpur the luggage is entrusted to a Transport Agency, who will send the luggage up by their coolies, otherwise known as Faltoos, and it will be delivered at your Mussoorie address in 3 to 4 hours. These agencies charge Rs. 1/8 per maund and As.-/1/6 for the toll. No toll tax is charged from the people who go up on foot, but those who go on horseback, or in a dandy must pay toll. The dandy is carried by four faltoos or coolies, and one or two others accompany the dandy up the stiff climb and the spare coolies take over to give the two others a "breather."

Having entrusted the luggage to the Agency, the visitor starts to walk up the steep slope through the Rajpur Bazar. After a mile or so he reaches the Toll Barrier. Here and there are boards on which the toll rates charged on various articles are displayed. No person is allowed to take any vehicle, animal or saleable goods past the barrier till the toll tax is paid. Even a coolie who carries a load of more than 5 seers is required to pay toll tax. The toll clerk will give you a proper receipt on receiving the tax, and this receipt should be kept carefully as it will be checked on the way, either by one of the Inspectors, or by a person authorised by the Municipality at the checking station at Jharipani.

VISIT ! ! !

Pure Ghee Sweet Shop

*100% Guaranteed Pure Ghee used in
Sweets, Kachawries etc.*

Our Specialities

- BALU SHAHI
- HALWA SOHAN
- LAUJ PISTA & BADAM
- PURIES & KACHAWRIES

**BEST ARRANGEMENTS FOR PARTIES
ARE UNDERTAKEN.**

Salig Ram Tiwari

Kulri Bazar, MUSSOORIE

VISIT



V.P. Gupta & Co

STATIONERS & BOOK-SELLERS

LANDOUR

MUSSOORIE

PHONE 19

After crossing the toll barrier, while you are ascending the steep climb you should always use a walking stick as a help to climb the hill. The road now goes round a beautiful bend and then makes a stiff ascent for another mile and Dehra Dun is now hidden from the eye of the touring traveller. But he hears the roar of the rushing waters of a stream down below in the valley. The whole scene here is most charming and beautiful, and the pedestrian cannot but be affected by it. He has also begun to realise by now that a mile done up the mountains is equal to 3 or 4 miles done on the plains. The road winds in and out of the hills, and in a little while Dehra Dun again comes into views and remain visible for some distance upwards. The visitor should avoid the short cuts made by the coolies on the hillsides as they are very dangerous to the uninitiated.

At Jharipani the toll receipts are checked and any person who has not paid the toll is then charged. There is a rest house and a School for the E. I. Railway European and Anglo-Indian boys and girls here. The School is called Oak Grove School. Two furlongs from Jharipani is Fairlawn Palace belonging to the Maharaja of Nepal, and it is supposed to be the largest house in Mussoorie.

From Fairlawn the road runs level for a mile or so and one feels happy and comfortable walking along it. Then comes Barlowganj. Here there is a

**TO THE PATRONS OF
VICTORY EGGS**

We have been serving the hill-side people and Missionary Community since last 25 years to their entire satisfaction with our full efforts in the supply of best quality of fresh eggs and fowls.

We charge very Competitive and moderate rates so that it may suit the rich & the poor alike.

Trial is solicited.

Yours faithfully,

PROPRIETOR

VICTORY EGG STORE
MALANGHAR GATE
LANDOUR, MUSSOORIE

For

- △ FRESH EGGS
- △ CHICKENS
- △ FOWLS . .

Visit ! ! !

Sharif Ahmed
Eggs, Chickens & Fowl Suppliers
KULRI BAZAR,
MUSSOORIE.

small bazar, Post and Telegraph Office, one or two small restaurants, a Sikh Gurdwara, and St. Fidelis High School and St. George's College. Here too is a famous *suspension bridge*. The climb now is perhaps the stiffest of the whole journey. But the visitor may console himself with the fact that Mussoorie is now only 2 miles away.

A mile higher up from Barlowganj are Wynberg School (for girls) and Henry Allen Memorial School (for boys) also known as Bala Hissar School. In 1842 the ex-Amir Dost Mohammad, an Afgan King, was sent to Mussoorie as a political prisoner and was kept in the old building which was named Bala Hissar after a fort in Kabul.

After passing these Schools, the road opens out into a fork. One road goes left, past the Civil Hospital, and brings you out at the Picture Palace near Kulri Bazar. The other goes right and brings you to the Landour Bazar and Castle Hill Estate. The first building you see is the Clock Tower. It was erected in 1942. It is the dividing point of Landour from Mussoorie.

The visitor who comes to Mussoorie or Landour for the first time, and is in search of lodging, has quite a choice before him. In the case of an Indian, he can choose either the Arya Samaj Mandir, or Sikh Gurdwara or Garhwali Dharamshala or Sanatan Dharamshala. In these four places a

Variety House

The Mall, MUSSOORIE

(Opp: Imperial Bank of India)

Ideal House For

*Silk & Woollen Materials,
Wools, High class Knitted
Woolies, Hosiery, Toilets,
Readymade Garments,
Toys, Games, Umbrellas,
Raincoats, and Gumboats
Leather Suitcases etc.*

Always Remember

Star Jewellers

THE MALL, KULRI BAZAR,
MUSSOORIE.

- △ WATCHES REPAIRED WITH GUARANTEE.
- △ THE BEST & CHEAP SPORTS CUPS AND SHEILDS
- △ LADIES & GENTS GOLD RINGS & BROOCHES.
- △ DEALERS OF GOLD, SILVER & DIAMONDS & ALL KINDS OF STONES.
- △ THE BEST PRESENTATION ARTICLES IN SILVER & E.P.N.S.
- △ EXPERTS IN ALL PRECIOUS & SEMI-PRECIOUS STONES.

visitor can stay *three days free of charge*. Rich and middle class people can be accommodated in one of the many fine Hotels, Boarding Houses, bungalows, cottages or other residential places.

4. "Journey by Motor Bus or Car".

When travelling up to Mussoorie in the bus or in your car, you may be tempted to ask something of the origin of the Motor Road. It was Mr. John Mackinnon, the Mussoorie Cart Road Engineer, who set it going, having previously planned the whole thing on paper. He was instrumental in completing it from Rajpur to Kulukhet. Most of the European firms in Mussoorie, who obviously stood to gain by the construction of such a road, assisted Mr. John Mackinnon financially. This road would get their heavy stuff by wheeled carts to Kulukhet quicker and cheaper. At first much trouble was experienced during the rainy season on account of land-slides and wash-aways, so it was neglected for some years. But Messrs Whymper and Company took the Crown Brewery on lease in 1876, and along with Messrs Mackinnon and Company, they repaired the cart road and got it going again. "Whymper's Tank" on "Brooklands" estate is still to be seen as a monument to the efforts of this great venture, a hard task taken up by these two companies in building the motor road to Mussoorie.

Send us Your Films

We believe THAT OUR DEVELOPING, PRINTING and ENLARGING SERVICE IS BETTER THAN YOU CAN OBTAIN ELSEWHERE.

Phone No. 28.

THUKRAL BROTHERS

LONDON HOUSE

THE MALL,



MUSSOORIE.

*All types of Photo goods available,
Mussoorie & General Views a Speciality.*

It was beneficial in another and indirect way. The poor coolies, for their livelihood, carried some very heavy articles to Mussoorie by the bridle path in the older days, as for instance, a piano, or heavy almirah. This kind of work cut short their lives considerably; now-a-days, the same articles go up by bus, involving the expenditure of no human energy on the way up.

In 1914 a visitor paid Rs. 4/- per seat in a car from Dehra Dun to Rajpur in order to save time and fatigue. From 1914 onward the Mackinnon cart road was greatly used up to Kulukhet, while many people used it as a "car" road. But by 1926 the Minister for Local-Self Government of the U.P. the Hon'ble Sir Mohammad Yusuf, by the help of a substantial Government grant, and by his special efforts and interest in the construction, changed this Mackinnon Cart road into a beautiful motor road.

After sometime the Motor terminus was shifted higher up from *Kulukhet to Bhatta*. The Bus charge per seat from Dehra Dun station to Bhatta was Rs. 1/- for a single seat in a bus, where as the rickshaw charges from there to Mussoorie were from Rs. 5/- to Rs. 10/-.

In 1929-30 the Motor road was extended to "Sunny View", and it was then that the great majority of the passengers going to Mussoorie were greatly encouraged to travel up and down the motor road because the journey by this

Novelty of Dehra Dun

HIGH CLASS DEHRA DUN
BASMATI RICE

AVAILABLE AT
MODERATE RATES

VISIT !!!

Prabh Dial Jagdish Lal

Rice Merchants and Commission Agents,
& Rice Purchasing Agents to U. P. Govt.

43, ARHAT BAZAR
CHOWK SAHARANPUR ROAD, DEHRA DUN.

road was comfortable and convenient. It takes about $1\frac{1}{2}$ hours or less from DehraDun to Mussoorie. It cost Rs. 1/6/- for a lower Class Seat and Rs. 1/15/6 an upper Class Seat in a U. P. Government Roadways motor bus. If the visitor wants to engage a full taxi, he can get it for Rs. 25/- from Dehra Dun to Mussoorie. But the Toll Tax is Rs. 1/8/- extra per head in a bus and Rs. 2/- per head extra by car, and is charged by the Municipality. It has nothing to do with the actual fares mentioned above. Only the officers and employes of City Board, Mussoorie, on official duty and all Dehar Dun Government Officials travelling on duty are exempted from the toll tax.

During the season the traffic is very heavy and one way traffic, or the "Gate" system, is enforced in order to avoid collision of the buses and the cars. The road is not very broad in some places, hence the Government has introduced "Gate Timings," which are strictly observed by the civil authorities. When the Gates are opened for up Traffic from Rajpur no bus or car comes down from KINCRAIG, Mussoorie, and vice versa except by special permit from the Superintendent of Police or the Superintendent of Doon. (Timings for Up and Down traffic are given on a separate Page in this book) The Collector or Superintendent of the Doon, Medical Officers, Superintendent of Police and a few other Government officers are allowed to use the Motor Road *at any time of the day or night.*

OUR SPECIALITIES.

★ Sealed Tins of Khurja Ghee

★ "Toofan Mail" Basmati Rice

PHONE 368

Devi Dayal

Surendra Kumar

PROVISION & GROCERY MERCHANTS,
CLOCK TOWER, MUSSOORIE.

Stay at

Victoria Hotel

*English Styled, comfortable, equipped
with Modern Furniture, connected and
separate Bath Rooms and Latrines
Ceiling Fans, Light, & Water.
Surrounded on both sides by Verandahs
Airy Gardens and Fountain Single
and Double Rooms available*

*Excellent English and Indian
Dishes always at service
Charges Moderate*

ONLY TWO MINUTES WALK FROM
RAILWAY STATION & BUS STAND
GANDHI ROAD, DEHRA DUN.

From the motor bus one gets a good view of its natural scenery, the green hills and the mountain streams, while the air too becomes cooler as we climb higher. The journey terminates at Kinraig, and we have $1\frac{1}{2}$ miles to go to reach the Library on the Mall. Owner-driven cars are permitted to go on up to the Library and park there; and if an owner has a special permit from the Superintendent of Police he can take his car right up Landour Bazar on the Mall.

On arriving at Kinraig you give your luggage to the coolies, note down their number and give them your Mussoorie addresses. They will do the rest, for the coolies are very honest and reliable; they do not try to tamper with the baggage, which they have been entrusted to carry.

Now at Kinraig there are two roads; one goes to the left, a continuation of the motor road, up to the Library Bazar; the other goes right. There is also a foot-path for pedestrians and dandies up the side of a steep cliff, which brings or leads out below the Kulri Bazar, and opposite the picture palace.

The Government has widened the road from Kinraig to the Library Bazar, sufficiently for motor traffic. In 1943, the Municipality further improved and widened the road from the Band Stand to the Landour Clock tower by blasting the rocks in several places so that motor vehicles can now go up

PHONE 58

CONNAUGHT CASTLE HOTEL

MUSSOORIE

A First Class Select Hotel

NEAR G. P. O., TEL. OFFICE

————— *NO CLIMB* —————

	AIRY, BRIGHT, SINGLE AND DOUBLE	
	SUITS WITH DRESSING & DRAWING	
	ROOMS WITH OR WITHOUT BOARD	

ALL COMFORTS WITH FIRST CLASS CATERING

VERY MODERATE RATES

to Library Bazar with a permit. But those who want to go by car up to Mullingar, have to secure a special permit from the Superintendent of Police, Mussoorie, for this purpose.

Recently certain parts of the Mall Road have been remade with cement and concrete, which has greatly improved them; and we are quite sure that if this road building process continues, Mussoorie would appear like a glorious garden with beautiful cemented roads in and around it.

5 The old Journey from Saharanpur to Rajpur

Before the Railway line was constructed right up to Dehra Dun, to connect it with the plains, the only way to the Doon was by a rough track built through the mountains from Saharanpur to Rajpur.

For the interest of the public, the Author quotes the old rates charged from Saharanpur to Rajpur as given in *Mussoorie Miscellany of 1936*.

- | | |
|--|----------|
| (1) Full Garry (2 passengers inside and 1 outside) | Rs. 40/- |
| (2) Two passengers out side and one inside. | Rs. 30/- |
| (3) One passenger inside and one outside | Rs. 25/- |
| (4) One Mail Cart Seat. | Rs. 11/- |

VISIT US ! ! ! !

For all sorts of

**FRESH BENGALI SWEETS
DELICIOUS INDIAN FOOD
HOT AND COLD DRINKS**

Everything FRESH, NEAT & CLEAN

AT MOST MODERATE RATES

A TRIAL WILL CONVINC YOU

JJEET RESTAURANT

Gandhi Chowk, ★ MUSSOORIE.

6. Life of the villagers In Rural Mussoorie.

Few hill stations possess so great a variety of scenery as Mussoorie. It has behind it the ranges of the highest mountains in the world, the snow-capped Himalayas; the perpetual abode of snow.

The Mussoorie scenery is unrivalled. It is a never-to-be-forgotten experience to be carried up from the Motor Stand in *dandies* on the shoulders of the hardy hillmen to the destination of the passenger.

On the sloping mountainsides at the back of Mussoorie, sheltered by the snowy ranges, are tiny villages, lonely and isolated from Mussoorie. These hill-folk build their simple dwellings of rock, and roof it with beams strong enough to withstand the winter snows. In these houses, the families must find shelter from the piercing blasts for four dreary months. Between December and March, they are absolutely cut off from the people of other adjoining places, and pass the time in wood-collecting and spending much of their time in gossip and smoking their hookahs (pipes). As soon as the snow begins to melt, these people living around Mussoorie start to visit it in order to sell some of their commodities, like ghee, milk etc.; or to obtain employment as coolies or as servants with some of the Europeans and well-to-do Indians, who come up in

For
Bungalows, Cottages, Suites of Rooms
and Hotel accomodation
and for
Modern Furniture & Niwar Beds

VISIT OR PHONE

Mussoorie Engineering Co.

The Mall, Mussoorie
PHONE 56

WE RENT AND SELL

OLDEST SHOP

at Mussoorie

PLEASE VISIT

Bhai Govind Singh & Co.

HOUSE AGENTS

General Suppliers of All Goods
Furniture Dealers on Hire & Sale
Phone No. 307

April, May and June to escape from the burning heat of the plains. When the "season" is over in October, these hill-men spend their earnings on things such as salt, gur, Kerosene oil and clothes, or ornaments.

These men earn from Rs. 300/- to Rs. 800/- in the season. They eat very simply in order to save money for their marriages, which are contracted only by giving cash or brood money to the bride's father and mother. This is the general custom among these hill-tribes. It is considered right among their class.

After being equipped with the necessary things for the journey, they tramp back to their distant homes, travelling over the mountains in groups for mutual protection; the solitary traveller, while he sleeps on the way, might be attacked by some wild animal and killed, or be relieved of his cash by some mountain robber.

7. Mussoorie can easily be divided into Six Parts or Sections.

(1) Barlowganj Section:—

It is situated on the bridle path from Rajpur to Mussoorie. Here the houses are far cheaper in rent than in Mussoorie proper. People who do not

Established 1888

**UN-SERVICEABLE
PIANOS & ORGANS
RESTORED IN EXCELLENT CONDITION**

BY

EXPERTS

REPAIRING & TUNING A SPECIALITY

Charges Moderate



Trial Solicited

PIANOS

AVAILABLE ON HIRE

Please write to or Call at:—

The British Piano Saloon (Lahore)

5-A, New Connaught Place, DEHRA DUN.

wish to stay at high altitudes will find that this is an ideal place. Of course the visitor will find himself a bit far from the gaieties of Mussoorie. This is a calm and quiet place, and is not as cold as Mussoorie and Landour. St. George's College is the only educational Institution here.

(2) Heart of Mussoorie—

The Second section stretches from Landour Clock Tower to the Library Bazar :—It is a charming and yet busy section of the City. This is called the "heart" of Mussoorie, providing all the enjoyment and the shopping one wants. Here we have the Cinemas, theatres, dance halls, Rink, and the good shops.

The Mall Road starting from Landour Clock Tower leads straight to the Picture Palace, where there are two roads; the one on the left goes down the hill and meets the Rajpur bridle path near *Allen Memorial School*; the second goes down to Kinraig; about 20 yards from the Picture Palace. There is the Tilak Library for the public use, newly built, and it contains a stock of good books, periodicals, magazines and daily newspapers in Hindi, Urdu and English. Continuing on the main road the Mall, which goes through Kulri Bazar, where all the big shops contain goods of every variety and type

Estd. at Abbotabad in 1888

SINGH JEWELLERS

Mfg. Jewellers, Engravers & Watch Makers

Opp. Punjab National Bank,
The Mall, Kulri, **MUSSOORIE**

Sports Cup Trophies
Ashoka Pillar Specialists

- Presentation Articles always in stock
- Pure Gold Ornaments of Modern Type
- We buy old gold and silver at Market Price
- We deal in Diamonds and other Gems Precious and semi-precious stones.
- Watches of High Quality
- Best repair work Guaranteed

FOR

Soft Coke, Steam Coal
and Charcoal

Please Visit ! ! !

Asa Ram & Sons

London House

THE MALL,

MUSSOORIE.

are found, we come to Hakman's Hotel, Stiffles, the Majestic Cinema, the Library Bazar and then to the Charleville Gate. The Mall Road between Hakman's and Charleville Gate is more or less level and one can enjoy walking on this road.

Before reaching the Kulri Bazar slope, the road branches off to the right and goes on by the Rink, Mussoorie's skating hall. This road is known as Camel's Back Road. It is a quiet road, and the visitor can enjoy a good ride or a peaceful walk along it without being disturbed or jostled about by the passing crowd. After going $\frac{1}{2}$ mile along this road the visitor will arrive at Christian Cemetery, another few twists and turns in the road and he comes to Scandal Point, where there is a shelter and benches to rest upon. From Scandal Point, one has a grand and uninterrupted view of the distances. Continuing down the road, you may come out near the Library, where it joins the Mall Road.

(3) From the Library Bazar to the Municipal Garden

This Section stretches from Library Bazar to the Municipal garden. This Section provides another ideal walk, and is not very crowded. At a short distance from the Library Bazar along the Mall Road is "The Savoy Hotel" which is one of the best English Hotels in Mussoorie. A little higher up, a

PHONE No,

SILVERTON HOTEL

MUSSOORIE

OPEN ALL THE YEAR!

The Most Popular Hotel in the Hills

SITUATION IDEAL

COMMANDING LOVELY SCENERY, AND
BEING WITHIN EASY ACCESS OF ALL
PLACES OF BUSINESS AND AMUSEMENTS.

smaller road branches off to the left, towards the Convent of Jesus and Mary. This is called Convent Lane. A mile still further on, another road branches off. This goes on to Chakrata, Simla and the Kempti Falls,

If the visitor continues on the Mall Road, he comes to the Charleville Hotel and here the Mall Road comes to an end.

From Charleville Hotel onwards, there is another fine Road, which is called "The Dick Road. This road winds in and out of the hills till it reaches the Mussoorie Municipal Gardens. The garden is an ideal place for picnicking and hiking.

(4) Vincent Hill Section

This Section stretches from Savoy Hotel to Vincent Hill, taking in Kapurthala Palace—

If visitors take the road going left from the Band stand, they will come to Circular Road which will lead them towards Vicent Hill School. The road is rather long but fairly level and is not very busy or crowded with traffic. It meets Dick Road near the Municipal Garden.

This Section of Mussoorie is rather quiet and peaceful as it is far from the gay and busy part of the town the main resort. The houses here are comparatively cheaper than in Kulri Bazar or on the Mall Road.

(5) Landour Bazar

The fifth Section is the Landour Bazar stretching from Landour Clock Tower to Ganesh Hotel. This is exclusively an Indian Bazar. It comprises a long chain of shops on both sides of the road. At certain points the road is very narrow. It is a central place for shopping. This Section of the town is very crowded and the houses are like pigeon holes and honey combs at the back of the Bazar. Because it is very very congested it is unhealthy for the people living around here. It is not either very neat and clean. The Bazar is about $\frac{3}{4}$ of a mile long. Not far from the Clock Tower is the Survey Drawing Office which is closed to the public. Below it lies a very good playground, known as "Taylor's Flat."

At the far end of the Bazar towards Landour Depot, if the visitor turns right he comes to the *Sikh Gurudwara* at *Khachchar-Khana*. Continuing down this road, he will come to burning ghats and cremation grounds. There is an old water spring here which used to supply water to the entire population of Landour Bazar in past times when taps, pipes were not in existence.

(6) Landour Depot

A sixth section of the city, it stretches from Ganesh Hotel to the top of the Lal Tibba. One meets a very stiff climb as one goes to the Depot.

which is on the highest hill of Mussoorie, being about 8000 ft above sea-level. This part of Mussoorie is where the American Missionaries reside principally. They come here to join the Landour Language School, in summer for a language course, they usually have two terms, i. e. from May to June, and from July to August. These missionaries work from 4 hours to 8 hours daily, in a climate that is cool and pleasant, so they do not feel tired studying so hard. The school maintains a first class trained and experienced staff of teachers for teaching, Urdu, Hindi and Punjabi to the missionaries. Some of the Madrasahs also join the School to learn one or other of these languages. This is the coolest section of Mussoorie. The climate is pleasant and healthy.

The houses are far cheaper than in Kulri Section. The one drawback is the procurement of food stuffs as the bazar is really far from this part. Moreover, although it is mostly a European or Western colony there are no places of entertainment near by. For these things they must run down to Mussoorie. From here one gets a beautiful lower view of Dehra Dun. The snow is visible early in the morning from *Kellog Church* and its vicinity.

8. History of Mussoorie and Landour.

- 1811 The old Government agreements show that Raja Soodarshan Sah sold Dehra Dun to an Anglo-Indian gentleman named Major Hyder Hearsey; (1811).
- 1812 He transferred the Doon to the East India Company in 1812, for a sum of Rs. 1200/- to be paid annually to him and his heirs. This sum has been paid to his successors ever since.
- 1814 In 1814, the Gurkhas tried to capture the valley of Doon, but they were forced to retreat by the East India Company's troops.
- 1815 The sale deed was confirmed in 1815.
- 1816 In 1816, the Raja of Nepal also gave away some of his territories adjoining the Doon Valley. After 4 years, i. e. in 1820, the Raja of Tehri-Garhwal was restored to his Raj. So it is from then that the real history of Mussoorie under the British rule begins. After the annexation of Doon, the area of Mussoorie came directly under the control of the collector of Saharanpur Mr Calvert. He was succeeded by Mr. F. J. Shore as Superintendent of Doon.

9. "Routes into the Interior".

(1) **Mussoorie to Gangotri. The height of which is 13,000 ft.**

	Miles		Miles
1. Mussoorie to Phedi ...	12	7. Nagani to Bhatwari ...	17
2. Phedi to Ballu ...	10	8. Bhatwari to Dangalla ...	11
3. Ballu to Lalcauri ...	9	9. Dangalla to Harsil ...	13
4. Lalcauri to Dharassu ...	8	10. Harsil to Jangla ...	8
5. Dharassu to Khailatta ...	15	11. Jangla to Gangotri ...	14
6. Khailatta to Nagani ...	9		<hr/>
			126

You go along the Tehri Road near Jalki—then up a steep *Khad* for a mile. Once upon a time there was good shooting on this road. The tourist should take his gun along with him. At some places, there are Dak Bungalows, at others, there are some rough built places to stay in. If the visitor wishes to visit the Glacier, there is a further march of 10 miles along the right bank of the River Ganges to a place below Gau-mukh. From here it takes at least 4 hours to reach the "Cow's Mouth", from where the Bhagirathi issues from the foot of the glacier. At Harsil the Neel Ganga, the Hari Ganga and Gupt Ganga form one stream.

10. Table of Distance

(1) From Mussoorie General Post Office

	Miles		Miles
to Chakrata ...	39	to Gangotri ...	126
„ Jamnotri ...	107	„ Simla ...	154
„ Delhi ...	170	„ Jumna Bridge ...	72
„ Tehri Estate ...	42	Via Chakrata Road	
„ Barlowganj ...	2	„ H/w House ...	4 $\frac{1}{4}$
„ Rajpur ...	8	„ Sahasra Dhara Springs ...	9
„ Dehra Dun Station	15	„ Lakhwar Dak Bungalow about	16
	Via Bridle	„ Nagthat ...	22
	path or foot	„ Kinncraig ...	1 $\frac{1}{2}$
	path.		
„ Landaar Bazar about	1 $\frac{1}{4}$		
„ Kempti Falls ...	6	Via Chakrata Road.	
„ Polo Ground ...	3 $\frac{1}{2}$	„ Benog	
„ The Park ...	3 $\frac{1}{2}$	Via Convent lane.	
„ Mossy Falls ...	2 $\frac{1}{2}$		
„ Round Camel's Back			
including Mall Road	2 $\frac{3}{4}$		

II. Height of Important Places in the District of Dehra Dun.

1.	Dehra Dun Railway Station	... 2,100 ft.
2.	Rajpur Crossing. (<i>near Rajpur Post Office</i>)	... 3,000 ft.
3.	Toll House (<i>on the Motor Road</i>)	... 4,000 ft.
4.	Half-way House (<i>on bridle path</i>)	... 5,000 ft.
5.	Toll Checking Station	... 5,200 ft.
6.	Kincraig (<i>Motor Terminus</i>)	... 6,000 ft.
7.	Kulri Bazar (<i>Methodist Church</i>)	... 6,500 ft.
8.	Observatory (<i>Evelyn Hall</i>)	... 6,872 ft.
9.	Castle Hill	... 6,909 ft.
10.	Waverly Convent	... 6985 ft.
11.	Vincent Hill School and College	... 7006 ft.
12.	Gun Hill	... 7029 ft.
13.	Abbey	... 7092 ft.
14.	Benog (<i>West end of Mussöorie</i>)	... 7483 ft.
15.	Landour Depot's water tanks	... 7527 ft.
16.	Roman Catholic Chapel at Landour Depot	... 7533 ft.
17.	Landour Depot	... 7550 ft.

18.	Lal Tibba (<i>Highest point at Landour</i>)	...	8000 ft.
19.	Pari Tibba	...	8000 ft.
20.	Top Tibba (<i>North East of Landour</i>)	...	8569 ft.

12. Places of Amusements in Mussoorie

(1). **The Skating Rink** :— 109 ft. × 50 ft.

The Rink is situated in Kulri Bazar. It is used for roller-skating, concerts and theatrical shows. In 1946, it was also used for wrestling matches, in which such famous wrestlers like King-Kong, a world heavy weight wrestler took part. It is also used by local Amateurs and the Schools and Colleges for their entertainments. It can accommodate as many as 2000 people on the floor and balconies.

(2) **The Picture Palace**

This Cinema Hall is 71 ft x 30 feet. At one end of the cinema, there is a tea and refreshment room and a fine billiard room and bar.

(8) **Hakman's Hotel and the Palladium Cinema**

It is situated in the heart of Mussoorie, on the Mall. The hotel is one of the best in Mussoorie, and patronised in the season.

(4) Other Cinemas are :—

Roxy Cinema, Plaza Cinema, Rialto Cinema close to Imperial Bank, Capital Cinema below Hakman's Ball room and the Majestic Cinema.

(5) Dances :—

Dances are held every week-end in Savoy-Hotel, Hakman's Hotel, Stiffle's Restaurant and Charleville Hotel.

(6) The Band Stand :—

It was constructed by His Highness the Maharaja of Kapurthala. Here on Wednesday and Saturday evenings full brass band plays for the public, who gather around in large numbers to enjoy the good music.

13. Ideal Picnic places.

(1) Benog:—

Benog is $6\frac{3}{4}$ miles from the Imperial Bank. It is 7483 ft. above sea level. If the visitor wishes to climb to the top of the hill, he should take Everest Road, pass the Park entrance to Cloud End. There is a foot-path which will connect Cloud End Hill with Benog. At the top of Benog, there are but a few trees and old ruined house. The visitor gets a beautiful view of the everlasting snows from here. This is one of the best places for picnic.

(2) **Kemptee Falls :—**

These falls are one of the most popular, biggest and grandest of all water falls in the neighbourhood of Mussoorie. It is about 6 miles from the Imperial Bank on the Chakrata Road. It is advisable for the ladies to take dandies and one or two Faltoos, carrying food and other provisions sufficient for the day.

(3) **Lal Tibba:—**

It is 8000 ft. high and is the highest point in Landour. A clear view of the horizon for miles around is obtained from the top of this summit. It is worth spending a full day. It is a nice and cool place for a picnic.

(4) **The Aglar Valley :—**

The best way to get to this place, is to walk 2 miles along the Chakrata Road and then take pagdandi (pathway or mountain track) down to the stream. A longer route is the path, leading from Camel's Back Road. The scenery along the stream is very charming and fascinating. Here one sees Nature at its best.

(5) **Bhatta Falls :—**

To get to the falls go down the cart road to Bhatta Village, and then follow a *Zig Zag* mountain track, which runs to the south of the village. If you

wish to visit Hydro-Electric Power House, which is on the way, it is necessary to first get permission from the Municipal Electrical Engineer. The Bhatta Falls are popular with picnickers.

(6) Mossy Falls and Hearsey Falls :—

These falls are situated near Barlowganj, on the premises of Mary Ville, a private estate and one must ask permission from the owner to picnic there. Sometimes the owner charges a nominal fee. This is another good place for an outing.

(7) The park :—

This is perhaps the favourite resort of all picnickers. From here one can obtain a lovely view of the Doon. To come here one must obtain permission from the owner of *Church view Cottage*, who is also the owner of the Park estate. There is ruined building on the top of the hill, which was the office of Colonel Everest the Surveyor General of India, after whom the great mountain is named.

(8) Top Tibba :—

It is situated north east of Londour, at a height of 8569 ft. above sea level on the Tehri Road. From here the visitor gets a clear view of Kedar-

nath, Badrinath, Nanda Devi and Bandar Punch. Do not miss the opportunity, while you are in Mussoorie, to visit this hill.

(9) The Jumna Bridge :—

It is 12 miles from Imperial Bank on the Chakrata Road, and a two days' visit instead of rushing through the spot in one day, will be both physically beneficial as well as enjoyable aesthetically. It is a very charming and attractive spot, and with a Camera one can Capture beauty that it is not easily found elsewhere. There is a rough dak bungalow here, where one can put up for a night or two.

(10) Hardy Falls :

These falls are to the South-West of Vincent Hill. The path is very rugged and difficult and very few people venture to these falls.

(11) Jabarkhet :—

This is the nearest place for a picnic being approximately 2 miles from the Imperial Bank on the Tehri Road. It is situated near Toll House. Here there is a beautiful natural spring and lovely grounds. Altogether an ideal place for a picnic especially for the small children, who can not go out very far away.

- (12) **Happy Valley Club**
- (13) **Botanical Gardens**
- (14) **Landour Depot (near water tanks)**
- (15) **Gun Hill**
- (16) **Vincent Hill**

14. Schools and Colleges in Mussoorie

English Institutions

(1) **St. George. College's (Barlowganj)**

It is conducted by the Irish Patrician Brothers. It was founded in 1854. It prepares for the Junior Cambridge, Senior Cambridge and Intermediate Arts and Science. It has Engineering, Teachers Training and Commercial departments. The examination results are remarkably good, Brother Phelan is the Principal of the College.

(2) **Hampton Court Convent :—**

It is governed by the Archbishop of Agra. It is under the supervision and guidance of Nuns of the order of Jesus and Mary. The boys under 12 years are admitted in the Hostel attached to it. It is upto the sixth standard. Mother Superior is the Principal.

(3) Vincent Hill School and College :—

The situation of the premises is good. It is under the supervision of the Seventh Day Adventist Mission. It prepares boys and girls for the Junior Cambridge, Senior Cambridge, Commercial Courses, Normal Training and Theology Courses. Pastor H. T. Terry is the Principal.

(4) Oak Grove School (Railway School at Half Way House)

It was built in 1888 by Roskell Bayne of the East Indian Railway. It consists of 3 Schools-Boys, Girls and Junior Schools, the two former being High Schools. It is undoubtedly an excellent School for European, and Anglo-Indian boys and girls. The results of the School are remarkably good. Mr. Charleston is the Principal of this Institution.

(5) Allen Memorial School for boys :—

The School is also known as Bala Hissar School. It was first started by Mr. Barton West in Landour. In 1894, it was shifted to the present site. Rev. W. J. Biggs is the Principal of the School.

(6) The Wynberg Girl's High School :—

It was started in 1894 along with Bala Hissar School. It prepares girls

for the Senior Cambridge Examination. Rev. W. J. Biggs is the Principal of the School.

(7) Wood Lands School—

In 1888 Mr. T. H. Garlah started this School in the premises of Willow Lodge and it shifted to Wood Land in the year 1905. This is only a boys School, and caters for Junior Cambridge Examination. It is situated about 150 yards from Clock Tower. Mr. T. H. Garlah was the founder of this Institution, but now his son Mr. C. H. Garlah is the principal of the School.

(8) Caineville House School—

In 1863 Archdeacon Pratt having raised Rs. 60,000 by Contribution and obtained a Government grant purchased the Caineville estate in Mussoorie and in 1864 a High School known as the Caineville House School for girls was opened. The buildings were enlarged in 1865 and again in 1867 and 1869. The property was transferred to the Bishop and Archdeacon of Calcutta as Trustees of the Diocesan Board of Education." It caters for the Senior Cambridge Examination, Miss. O. M. R. Wilson is the Principal of the School. (Extract taken from Gazetteer, written by Mr. H. G. Walton, Page 157.)

(9) Convent of Jesus and Mary or Waverly School :—

It was started in 1845. The children are under the direct supervision of the Nuns of Jesus and Mary. It caters for the Cambridge University Examinations. The results of the Examinations are excellent. Prospectus and other informations can be obtained on application to the Revd: Mother Superior.

(10) WoodStock School and College

In Landour too are Woodstock School and College run by American missionaries. It has co-education. The college also has a Teacher's Training Department, the certificate of which is recognized by the Education Department of Government of India.

(11) Landour Language School, Landour Cantt.

This is the only Language School in Indian Union, where Hindi, Urdu, Punjabi, Mahratti and Oriental languages are taught to Christian Missionaries. The School opens in April and continues to the end of August. Mr. R. C. Smith., M. A. is the Principal of the School.

Indian Schools and Colleges

(1) **Govt. Ghananand Inter-College:—**

It is situated below Kinraig. This College has been greatly improved and developed in the last few years. It has gained public sympathy. No doubt it is far from the main residence of the people, but still it is gaining strength in number and standard of teaching. It caters for the Board of High School and Intermediate Education. (Allahabad) Mr. Ehtisham Ali is the Principal of the school.

(2) **Sanatan Dharam Girls School**

(Near Ganesh Hotel, Landour Bazar).

(3) **Govt. Girl's Higher Secondary School, Mussoorie.**

It is a fine girls High School and caters for Allahabad High School Examination. It provides a good education under a competent and well qualified staff. Miss Pandya is the Principal of the School.

(4) **Rama Devi Higher Secondary School for Boys:**

This is a High School for boys and it is gaining ground day by day. And efforts are being made to raise the standard of education in every way. Mr. K. P. Jain is the Manager of the School.

15. Dog Tax.

Every dog of the age of six months or over brought within the Municipal Limits of Mussoorie and kept for more than 10 days must be registered in the Municipal Office. The registration will be valid upto 31st March next following. A fee of Rs. 3/- for each dog is payable to the Municipality. After the registration the owner of the dog will get a metal token, which bears the number of registration. Every dog should wear a collar to which the metal token should be attached.

16. Landour

Landour was originally a convalescent depot for British soldiers. In 1827, Capt R. McMullen constructed quarters for the convalescent soldiers. The first batch arrived in April 1829. All the bungalows and other buildings are directly under Cantonment rules and regulations. There are some bungalows for married families of officers, who are sent up for the summer. It has hospital for men and women, a library, and orderly room and an English School for British families.

The station is provided with a Medical Officer, a Chaplain, a S. S. O. and a Commandant to deal with matters concerning the Cantonment residents.

Landour is much higher than Mussoorie and the climate is excellent. From Landour one gets a clear view of the everlasting snows on the ranges behind especially in the morning at about 6 o'clock. Landour has an area of approximately 1000 acres. It has grown in the last 50 to 60 years, and a number of the houses along the lower slopes are invariably taken by American missionaries during the season.

Landour is less populated than Mussoorie. There are fewer buildings and consequently there are more flowers etc. These are the main buildings included in Landour.

(a) Churches:—

- (1) Kellog Memorial Church.
- (2) Roman Catholic Chapel.
- (3) St. Paul's Church.

(b) Other things are :

- (1) P. O. & Telegraph Office.
 - (2) Several nice English Hotels and Boarding Houses for Americans only.
 - (3) Military Hospital.
 - (4) Community Hospital (especially for Missionaries and Indians).
-

Railway Time Table and Motor Gate Timings

Kotalgaon to Kinraig (Kotalgaon Gate)	Kinraig to Kotalgaon (Kinraig Gate)	Kinraig to Library Car Park (Kinraig Gate)	Library Car Park to Kinraig (Library Gate)	Arrivals of Trains at Dehra Dun	Departure of Trains from Dehra Dun
05.00-05.15	06.30-06.45	05.55-06.10 07.00-07.15	06.20-06.30 08.00-08.15 Delhi Express-	Light Train (from Dehra to Lhaksar)
08.00-08.15	09-15-09.25	08.50-09.00 09.25-09.35	09.10-09.20 10.00-10.10	07.12 Hrs. Doon Express-	-07.50 Hours Bombay
10.25-10.35	12.00-12.15	10.20-10.30 11.15-11.40	10.40-10.50 11.50-12.00	08.45 ,, Amritsar Dehra	Express-11.30Hrs. Amritsar Passen-
13.15-13.25	14.45-15.00	12.30-13.00 14.10-14.30	13.15-13.40 14.40-14.50	Passenger-13.00.,	ger -15.24 Hrs. Doon Express-
16.00-16.10	17.30-18.00	15.30-15.40 16.50-17.10	15.55-16.10 17.20-17.30	Bombay	19.30 ,,
19.10-19.20	...	17.40-17.50 18.50-19.10 20.00-20.30	18.00-18.15 19.30-19.40 20.45-21.40	Express-18.10 ,, Light Train from Lhaksar-21.42 ,,	Delhi Express- 20.12 ,,

PUBLICATIONS

By A. W. CORNELIUS, 118 Chukhuwala, Dehra Dun.

	Price			Price	
	Rs.	As.		Rs.	As.
1. Dehra Dun Guide	...	0 6	9. Nepali Grammar	...	3 0
2. Dehra Dun Distt. Map	...	1 8	for Beginners		
in Hindi			10. English to Nepali	...	3 0
3. Badri-Kedar Yatra Guide	...	0 12	Dictionary		
in English with Map			11. Nepali to English	...	3 0
4. Badri-Kedar Yatra	...	0 8	Dictionary		
in Hindi with Map			12. Hospital Phrase Book	...	1 0
5. Badri-Kedar Yatra Map	...	0 6	in Roman and English		
in English			13. Agra Guide	...	0 8
6. Badri-Kedar Yatra Map	...	0 6	14. Delhi Guide	...	1 0
Map in Hindi			15. A Historical Survey of		
7. English Teacher	...	3 0	The Taj Mahal	...	0 8
(in English and Roman			<i>(Italian Designer's Art and his fate;</i>		
Hindustani)			16. A Historical Survey of		
8. Hindi Conversational	...	3 0	The Kutab Area	...	0 8
Vocabulary			(with beautiful Map)		

Preparation For Service.....

BY THE HARMONIUS DEVELOPMENT OF

- ★ **the physical** . . .
- ★ **the mental** . . .
- ★ **and the spiritual powers**

Vincent Hill School

AND INDUSTRIES

✻ VINSCHOOL BAKERY ✻ VINSCHOOL PRESS ✻ VINSCHOOL LAUNDRY

Vasant Press, Dehra Dun.